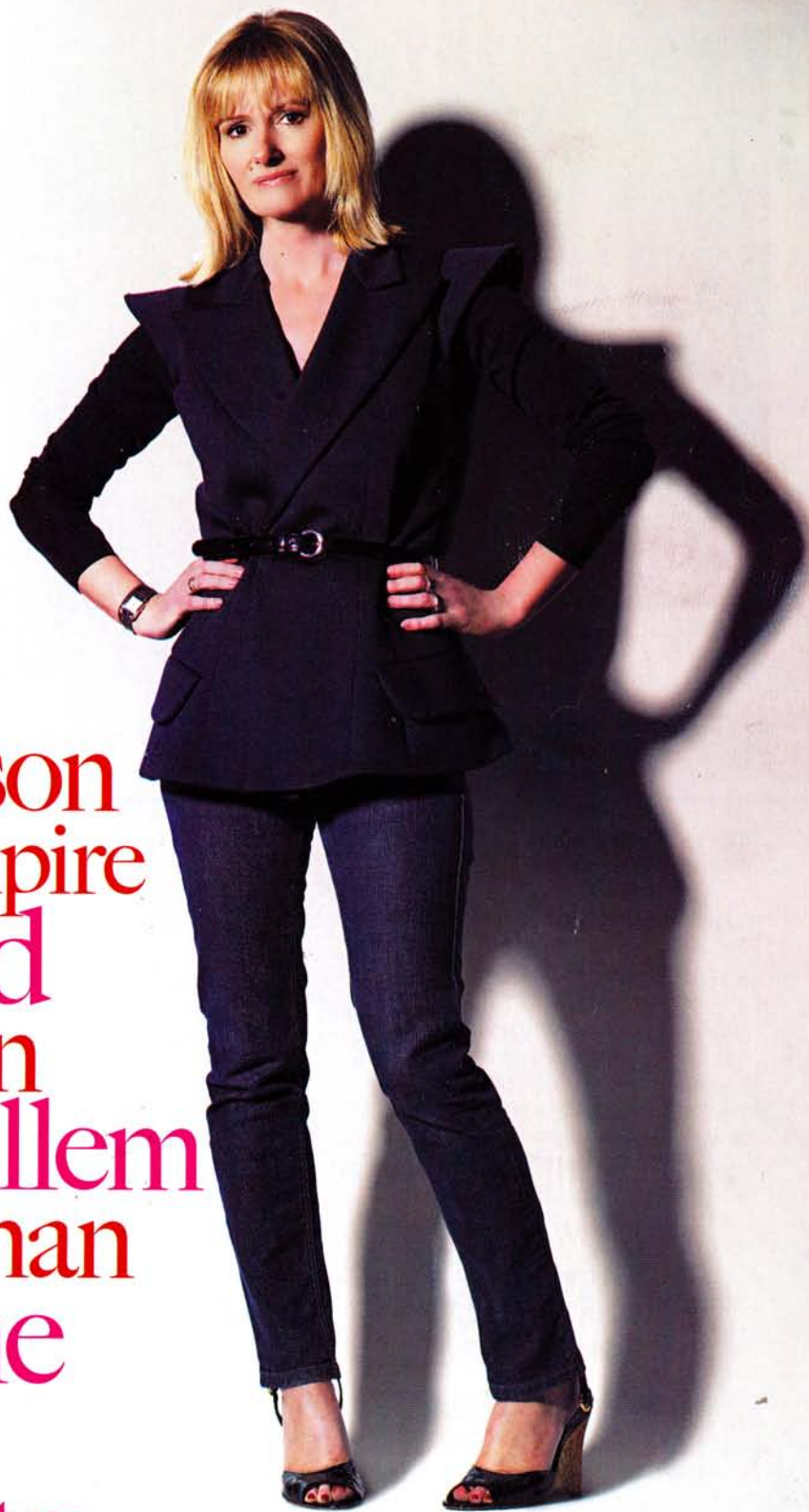


SUPPLEMENT OF THE YEAR

JANE SHEPHERDSON
PHOTOGRAPHED BY
JAMIE BAKER

Observer
WOMAN
MARCH 2008 NO27



Jane Shepherdson
on her new empire

Zaha Hadid

Jam Donaldson

Sylvie Guillem

Sarah Silverman

Candis Cayne

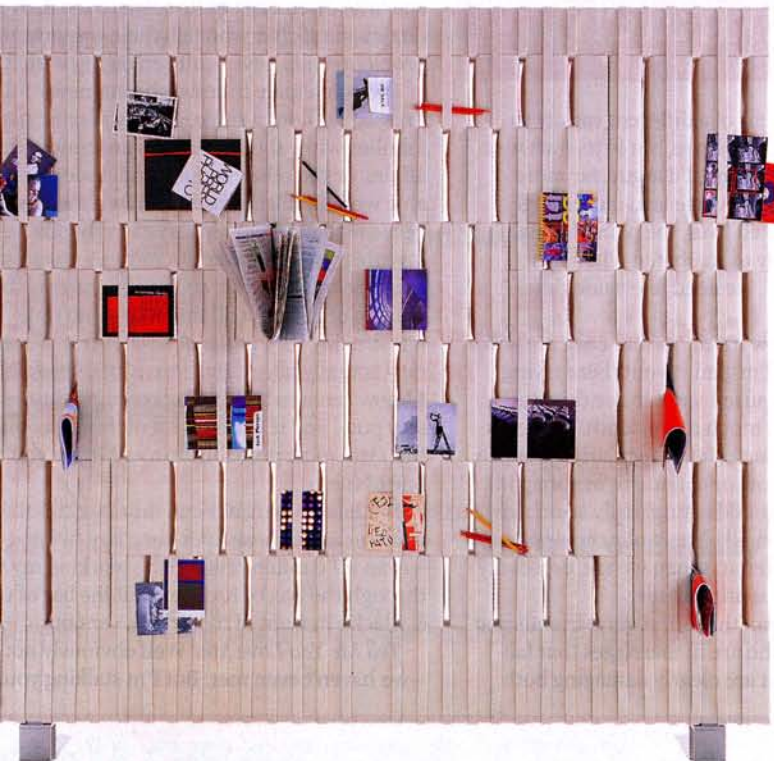
Emily Benn

Beth Ditto

Radical women

Storage with style

AS CHOSEN BY
MICHELLE OGUNDEHIN
EDITOR, ELLE DECORATION



Top row from left: cream MDF trunks, £20 for two, Matalan, www.matalan.co.uk; wooden birch boxes, £149 each, Store, 0870 224 2660, www.beforeeverything.co.uk; moulded plywood drinks trolley, £1,650, by Verner Panton for Vitra, 020 7608 6200, www.vitra.com. **Middle row:** lacquered MDF walnut veneer table, £1,300, Vaugh Shannon, www.vaughshannon.com; oak trolley, £2,120, Giampaolo Benedini, Alternative Plans, 020 7228 6460, www.alternative-plans.co.uk. **Bottom row:** Felt 'Softwall' wall partition, £2,375, Carsten Gerhards and Andreas Glücker, B&B Italia, 020 7591 8111, www.bebitalia.it; Lightning shelf, £212, Save Our Souls, www.saveoursouls.se; veneered shelving, £270, in 8 colours, Karl Andersson & Söner, www.karl-andersson.se.